

SDRMonitor

(Version 2.2.1 -- Revised: February 6, 2017)



Users Guide

Ray Andrews, K9DUR

TABLE OF CONTENTS

Introduction.....	3
System Requirements.....	3
Installation.....	3
Program Operation.....	3
Main Display.....	4
Setting the Display Position.....	4
Closing the Program.....	4
System Tray Icon & Menu.....	5
About the Author.....	5
Revision History.....	6

INTRODUCTION

SDRMonitor is a small utility for use with FLEX-6000 series radios running **SmartSDR™**. It displays the current power supply voltage and power amplifier temperature of the connected radio.

SDRMonitor communicates directly with the radio over the local network using the **FlexLib™** API.

SYSTEM REQUIREMENTS

SDRMonitor requires Windows Vista or later. It is a 32-bit application, and therefore will run on a computer with either a 32-bit or a 64-bit processor.

Adobe Acrobat Reader® or a similar program capable of displaying .pdf files is required to view the program documentation.

INSTALLATION

Run the installation package file, **SDRMonitorSetup.exe**. This will install **SDRMonitor.exe** and all required supporting files on your computer. The installer will suggest a default location for the program file. You may change the location or leave it at the default, it does not matter.

PROGRAM OPERATION

When the program starts, the window shown in Figure 1 will be displayed. This window will contain a list of available FLEX-6000 series radios for you to choose between. Connect to the desired radio by double-clicking on it in the list or by clicking on it and then clicking on the "Connect" button. If you click on the "Cancel" button, the program will close.

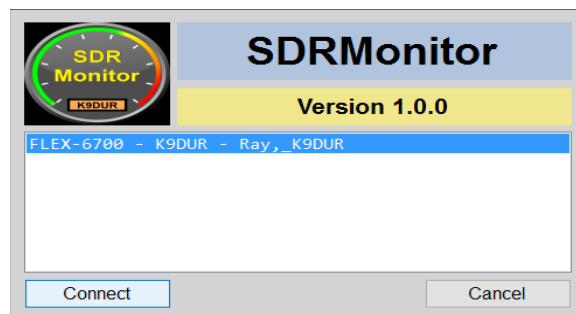


Figure 1 -- Radio Connection Window

If you have "Autoconnect" selected, the program will automatically connect to the first radio it discovers. If no radio is found after 15 seconds, the program will close with an error message.

MAIN DISPLAY

After you have connected to the radio, the main window, shown in Figure 2, will be displayed.



13.46V 32.8°C

Figure 2 - Main Window

The left box displays the current power supply voltage. The data sheet for the 6000-series radios lists the acceptable power supply voltage as 13.8V \pm 15%, which translates to a range of 11.73V to 15.87V. If the voltage drops below 12.0V, then the display colors will change to red letters on a yellow background. If the voltage exceeds 15.5V, then the display colors will change to yellow letters on a red background.

The right-hand box displays the current temperature of the power amplifier in degrees Celcius ($^{\circ}$ C). If the temperature exceeds 70 $^{\circ}$ C, then the display colors will change to yellow letters on a red background. This is the temperature at which the speed of the fan in the radio increases from low to high.

SETTING THE DISPLAY POSITION

To position the display on the screen, place the cursor over the display, hold the left mouse button down, and drag the display to the desired position.

If you drag the display to a position within the **SmartSDR** window, then the **SDRMonitor** display will be anchored to the SmartSDR display position. That is, if you move the **SmartSDR** window, the **SDRMonitor** display will move accordingly, always keeping the same position relative to the **SmartSDR** window.

If you drag the display to any position that is not totally inside the borders of the **SmartSDR** window, then the **SDRMonitor** display will be fixed at that position on the screen.

CLOSING THE PROGRAM

To close the program, you can either:

- Right-click on the main display and click on "Yes" on the confirmation message box that is displayed, or
- Right-click on the system tray icon & click on "Close SDRMonitor".

SYSTEM TRAY ICON & MENU

SDRMonitor does not display an icon on the task bar, but rather puts a small icon in the system tray.

Right-clicking on the system tray icon will display a menu with the following items:

- **Always On Top** -- Toggles whether the display will always display on top of other applications.
- **Autoconnect** -- Toggles whether the program will automatically connect to the first radio found. Also, program will continue running when the connection to the radio is lost & will automatically re-connect to the radio when the radio is found again.
- **Degrees F** -- Toggles whether the program will display the temperature in Celsius (°C) or in Fahrenheit (°F). The program displays the temperature in degrees Celsius by default.
- **Display Documentation** -- Displays the program documentation (this document).
- **About SDRMonitor** -- Displays basic information about the program.
- **Close SDRMonitor** -- Closes the program.

ABOUT THE AUTHOR

SDRMonitor was written by Ray Andrews, K9DUR.

Ray holds an Amateur Extra class license and was first licensed in April 1960. He currently resides in West Terre Haute, IN, and is a retired electronic design engineer and software developer. He operates a small custom software consulting business just to keep him out of mischief between camping trips.

For more information, visit Ray's web page:

<http://k9dur.info>

REVISION HISTORY

- 2.2.1 – February 6, 2017 – Re-compiled with latest FlebLib .dll files. Added scaling factor to voltage readout for versions of SmartSDR before v1.11.1.
- 2.2.0 – November 18, 2016 – Moved setup data from “My.Settings” to .xml file.
- 2.1.0 – October 21, 2016 – Added option to display temperature in °C or °F.
- 2.0.4 – January 6, 2016 – Refined code that gets handle to SmartSDR window.
- 2.0.3 – December 23, 2015 – Changed anchor to SmartSDR behavior so that it only anchors to the main window & not the setup screen.
- 2.0.2 – December 14, 2015 – Changed autoconnect behavior to leave SDRMonitor running if connection to radio is lost & automatically re-connect when the connection is re-established.
- 2.0.1 – December 11, 2015 – Fixed Z-order issue that was preventing SDRMonitor from being displayed on top of the SmartSDR client in certain circumstances.
- 2.0.0 – December 9, 2015 – Automated “Anchor to SmartSDR” function.
- 1.1.1 – November 6, 2015 – Added program name to title bar of “Radio Connection Lost” message box.
- 1.1.0 – October 31, 2015 – Added the ability to automatically connect to the first radio found.
- 1.0.1 – September 15, 2015 -- Made changes to prevent user from clicking on "Connect" before radio is listed. Cleaned up the way the program reacts to loss of connection to radio.
- 1.0.0 – September 13, 2015 -- Initial Release.